

Product datasheet for **TA331668**

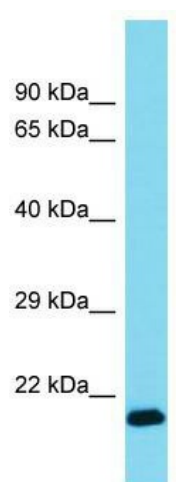
Calml4 Rabbit Polyclonal Antibody

Product data:

Product Type:	Primary Antibodies
Applications:	WB
Recommended Dilution:	WB
Reactivity:	Mouse
Host:	Rabbit
Isotype:	IgG
Clonality:	Polyclonal
Immunogen:	The immunogen for Anti-Calml4 Antibody is: synthetic peptide directed towards the N-terminal region of Mouse Calml4. Synthetic peptide located within the following region: YKECFSLYDKQQRGKIKATDLLVSMRCLGASPTPGEVQRHLQTHGIDKNG
Formulation:	Liquid. Purified antibody supplied in 1x PBS buffer with 0.09% (w/v) sodium azide and 2% sucrose.
Conjugation:	Unconjugated
Storage:	Store at -20°C as received.
Stability:	Stable for 12 months from date of receipt.
Predicted Protein Size:	17 kDa
Gene Name:	calmodulin-like 4
Database Link:	NP_612177 Entrez Gene 75600 Mouse Q91WQ9
Background:	The function of this protein remains unknown.
Synonyms:	MGC4809; NY-BR-20
Note:	Immunogen sequence homology: Pig: 100%; Rat: 100%; Horse: 100%; Human: 100%; Mouse: 100%; Bovine: 100%; Rabbit: 93%; Dog: 86%

[View online »](#)

Product images:



Host: Rabbit; Target Name: Calml4; Sample
Tissue: Mouse Pancreas lysates; Antibody
Dilution: 1.0ug/ml