

Product datasheet for **TA331667**

Atherin (SAMD1) Rabbit Polyclonal Antibody

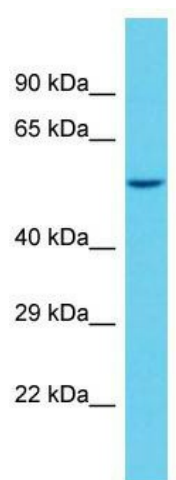
Product data:

Product Type:	Primary Antibodies
Applications:	WB
Recommended Dilution:	WB
Reactivity:	Human
Host:	Rabbit
Isotype:	IgG
Clonality:	Polyclonal
Immunogen:	The immunogen for Anti-SAMD1 Antibody is: synthetic peptide directed towards the C-terminal region of Human SAMD1. Synthetic peptide located within the following region: GKPALPGADGTPFGCPPGRKEKPSDPVEWTVMDVVEYFTEAGFPEQATAF
Formulation:	Liquid. Purified antibody supplied in 1x PBS buffer with 0.09% (w/v) sodium azide and 2% sucrose.
Conjugation:	Unconjugated
Storage:	Store at -20°C as received.
Stability:	Stable for 12 months from date of receipt.
Predicted Protein Size:	56 kDa
Gene Name:	sterile alpha motif domain containing 1
Database Link:	NP_612361 Entrez Gene 90378 Human Q6SPF0
Background:	SAMD1 may play a role in atherogenesis by immobilizing LDL in the atherial wall.
Synonyms:	atherin
Note:	Immunogen sequence homology: Human: 100%; Pig: 93%; Rat: 93%; Mouse: 93%; Guinea pig: 93%; Dog: 86%; Horse: 86%; Rabbit: 86%



[View online »](#)

Product images:



Host: Rabbit; Target Name: SAMD1; Sample
Tissue: NCI-H226 Whole Cell lysates; Antibody
Dilution: 1.0ug/ml