

Product datasheet for **TA331664**

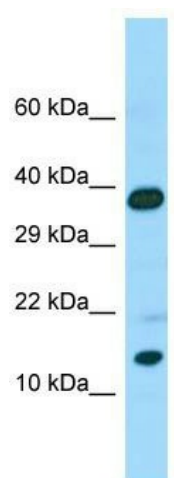
CALML6 Rabbit Polyclonal Antibody

Product data:

Product Type:	Primary Antibodies
Applications:	WB
Recommended Dilution:	WB
Reactivity:	Human
Host:	Rabbit
Isotype:	IgG
Clonality:	Polyclonal
Immunogen:	The immunogen for Anti-CALML6 Antibody is: synthetic peptide directed towards the C-terminal region of Human CALML6. Synthetic peptide located within the following region: YHEKAQNQESELRAAFRVFDKEGKGYIDWNTLKYVLMNAGEPLNEVEAEQ
Formulation:	Liquid. Purified antibody supplied in 1x PBS buffer with 0.09% (w/v) sodium azide and 2% sucrose. <i>Note that this product is shipped as lyophilized powder to China customers.</i>
Conjugation:	Unconjugated
Storage:	Store at -20°C as received.
Stability:	Stable for 12 months from date of receipt.
Predicted Protein Size:	20 kDa
Gene Name:	calmodulin like 6
Database Link:	NP_619650 Entrez Gene 163688 Human Q8TD86
Background:	The function of this protein remains unknown.
Synonyms:	CAGLP
Note:	Immunogen sequence homology: Human: 100%; Dog: 93%; Rat: 79%; Bovine: 79%
Protein Pathways:	Alzheimer's disease, Calcium signaling pathway, Glioma, GnRH signaling pathway, Insulin signaling pathway, Long-term potentiation, Melanogenesis, Neurotrophin signaling pathway, Olfactory transduction, Oocyte meiosis, Phosphatidylinositol signaling system, Vascular smooth muscle contraction



[View online »](#)

Product images:

Host: Rabbit; Target Name: CALML6; Sample
Tissue: Placenta lysates; Antibody Dilution:
1.0ug/ml