

## Product datasheet for **TA331663**

### Pou3f1 Rabbit Polyclonal Antibody

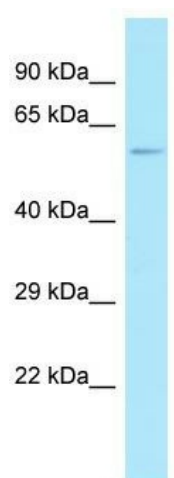
#### Product data:

Product Type:	Primary Antibodies
Applications:	WB
Recommended Dilution:	WB
Reactivity:	Rat, Human
Host:	Rabbit
Isotype:	IgG
Clonality:	Polyclonal
Immunogen:	The immunogen for Anti-Pou3f1 Antibody is: synthetic peptide directed towards the C-terminal region of Rat Pou3f1. Synthetic peptide located within the following region: CPKPSAHEITGLADSLQLEKEVVRVWFCNRRQKEKRMPAAGAGHPPMDD
Formulation:	Liquid. Purified antibody supplied in 1x PBS buffer with 0.09% (w/v) sodium azide and 2% sucrose. <i>Note that this product is shipped as lyophilized powder to China customers.</i>
Conjugation:	Unconjugated
Storage:	Store at -20°C as received.
Stability:	Stable for 12 months from date of receipt.
Predicted Protein Size:	49 kDa
Gene Name:	POU class 3 homeobox 1
Database Link:	<a href="#">NP_620193</a> <a href="#">Entrez Gene 5453 Human</a> <a href="#">Entrez Gene 192110 Rat</a> <a href="#">P20267</a>
Background:	Pou3f1 may act as a transcriptional regulator of gene expression during Schwann cell differentiation and myelination.
Synonyms:	Oct-6; OCT6; OTF6; SCIP
Note:	Immunogen sequence homology: Dog: 100%; Pig: 100%; Rat: 100%; Horse: 100%; Human: 100%; Mouse: 100%; Bovine: 100%; Rabbit: 100%; Guinea pig: 100%; Zebrafish: 77%



[View online »](#)

## Product images:



Host: Rabbit; Target Name: Pou3f1; Sample  
Tissue: Rat Thymus lysates; Antibody Dilution:  
1.0ug/ml