

Product datasheet for TA331662

SGCZ Rabbit Polyclonal Antibody

Product data:

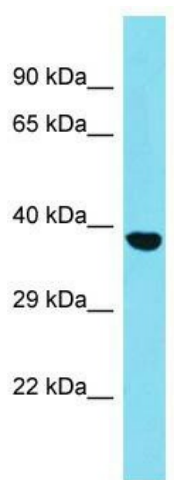
| | |
|-------------------------|--|
| Product Type: | Primary Antibodies |
| Applications: | WB |
| Recommended Dilution: | WB |
| Reactivity: | Human |
| Host: | Rabbit |
| Isotype: | IgG |
| Clonality: | Polyclonal |
| Immunogen: | The immunogen for Anti-SGCZ Antibody is: synthetic peptide directed towards the C-terminal region of Human SGCZ. Synthetic peptide located within the following region: EPSQDLRLSPTRSLIMEAPRGVQVSAAAGDFKATCRKELHLQSTEGEIF |
| Formulation: | Liquid. Purified antibody supplied in 1x PBS buffer with 0.09% (w/v) sodium azide and 2% sucrose. |
| Conjugation: | Unconjugated |
| Storage: | Store at -20°C as received. |
| Stability: | Stable for 12 months from date of receipt. |
| Predicted Protein Size: | 34 kDa |
| Gene Name: | sarcoglycan zeta |
| Database Link: | NP_631906 Entrez Gene 137868 Human Q96LD1 |
| Background: | The zeta-sarcoglycan gene measures over 465 kb and localizes to 8p22. This protein is part of the sarcoglycan complex, a group of 6 proteins. The sarcoglycans are all N-glycosylated transmembrane proteins with a short intra-cellular domain, a single transmembrane region and a large extra-cellular domain containing a carboxyl-terminal cluster with several conserved cysteine residues. The sarcoglycan complex is part of the dystrophin-associated glycoprotein complex (DGC), which bridges the inner cytoskeleton and the extra-cellular matrix. |
| Synonyms: | ZSG1 |


[View online »](#)

Note: Immunogen sequence homology: Dog: 100%; Pig: 100%; Rat: 100%; Horse: 100%; Human: 100%; Mouse: 100%; Rabbit: 100%; Guinea pig: 100%

Protein Families: Transmembrane

Product images:



Host: Rabbit; Target Name: SGCZ; Sample Tissue: HepG2 Whole Cell lysates; Antibody Dilution: 1.0ug/ml