

Product datasheet for TA331661

PPM1L Rabbit Polyclonal Antibody

Product data:

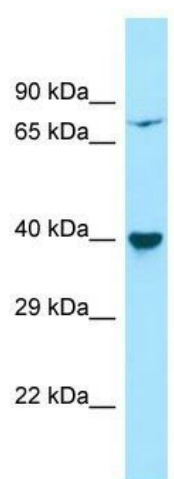
Product Type:	Primary Antibodies
Applications:	WB
Recommended Dilution:	WB
Reactivity:	Human
Host:	Rabbit
Isotype:	IgG
Clonality:	Polyclonal
Immunogen:	The immunogen for Anti-PPM1L Antibody is: synthetic peptide directed towards the middle region of Human PPM1L. Synthetic peptide located within the following region: SRLPEALKQHLQDYEKDKENSVLSYQTILEQQILSIDREMLEKLTVSYDE
Formulation:	Liquid. Purified antibody supplied in 1x PBS buffer with 0.09% (w/v) sodium azide and 2% sucrose. <i>Note that this product is shipped as lyophilized powder to China customers.</i>
Conjugation:	Unconjugated
Storage:	Store at -20°C as received.
Stability:	Stable for 12 months from date of receipt.
Predicted Protein Size:	40 kDa
Gene Name:	protein phosphatase, Mg ²⁺ /Mn ²⁺ dependent 1L
Database Link:	NP_640338 Entrez Gene 151742 Human Q5SGD2
Background:	PPM1L, or PP2CE, belongs to the PP2C group of serine/threonine phosphatases, which are distinguished from other phosphatases by their structure, absolute requirement for Mg(2+) or Mn(2+), and insensitivity to okadaic acid. PP2Cs regulate stress-activated protein kinase signaling cascades that respond to extracellular stimuli.
Synonyms:	PP2C-epsilon; PP2CE; PPM1-LIKE
Note:	Immunogen sequence homology: Dog: 100%; Pig: 100%; Rat: 100%; Horse: 100%; Human: 100%; Mouse: 100%; Bovine: 100%; Guinea pig: 100%



[View online »](#)

Protein Families: Druggable Genome, Phosphatase

Product images:



Host: Rabbit; Target Name: PPM1L; Sample Tissue: HepG2 Whole Cell lysates; Antibody Dilution: 1.0ug/ml