

Product datasheet for **TA331659**

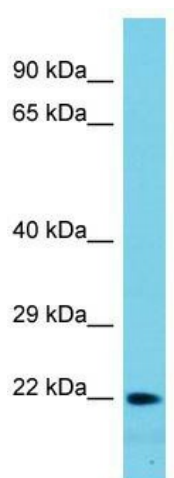
NY-ESO-1 (CTAG1A) Rabbit Polyclonal Antibody

Product data:

Product Type:	Primary Antibodies
Applications:	WB
Recommended Dilution:	WB
Reactivity:	Human
Host:	Rabbit
Isotype:	IgG
Clonality:	Polyclonal
Immunogen:	The immunogen for Anti-CTAG1A Antibody is: synthetic peptide directed towards the N-terminal region of Human CTAG1A. Synthetic peptide located within the following region: DGPGGGPIPDGPGGNAGGPGGAGATGGRGRGAGAARASGPGGGAPRGPH
Formulation:	Liquid. Purified antibody supplied in 1x PBS buffer with 0.09% (w/v) sodium azide and 2% sucrose. <i>Note that this product is shipped as lyophilized powder to China customers.</i>
Conjugation:	Unconjugated
Storage:	Store at -20°C as received.
Stability:	Stable for 12 months from date of receipt.
Predicted Protein Size:	20 kDa
Gene Name:	cancer/testis antigen 1A
Database Link:	NP_640343 Entrez Gene 246100 Human P78358
Background:	CTAG1A is an identical copy of the CTAG1B gene.
Synonyms:	CT6.1; ESO1; LAGE-2; LAGE2A; NY-ESO-1
Note:	Immunogen sequence homology: Human: 100%
Protein Families:	Druggable Genome



[View online »](#)

Product images:

Host: Rabbit; Target Name: CTAG1A; Sample Tissue: HT1080 Whole Cell lysates; Antibody Dilution: 1.0ug/ml. CTAG1A is strongly supported by BioGPS gene expression data to be expressed in Human HT1080 cells