

Product datasheet for **TA331656**

PPTC7 Rabbit Polyclonal Antibody

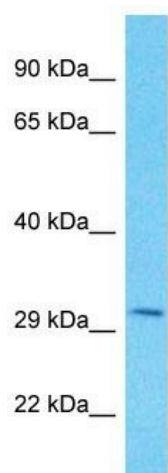
Product data:

Product Type:	Primary Antibodies
Applications:	WB
Recommended Dilution:	WB
Reactivity:	Human
Host:	Rabbit
Isotype:	IgG
Clonality:	Polyclonal
Immunogen:	The immunogen for Anti-PPTC7 Antibody is: synthetic peptide directed towards the C-terminal region of Human PPTC7. Synthetic peptide located within the following region: LVMRGGEVHRSDEQQHYFNTPFQLSIAPPEAEGVVLSDSPDAADSTSF
Formulation:	Liquid. Purified antibody supplied in 1x PBS buffer with 0.09% (w/v) sodium azide and 2% sucrose. <i>Note that this product is shipped as lyophilized powder to China customers.</i>
Conjugation:	Unconjugated
Storage:	Store at -20°C as received.
Stability:	Stable for 12 months from date of receipt.
Predicted Protein Size:	32 kDa
Gene Name:	PTC7 protein phosphatase homolog
Database Link:	NP_644812 Entrez Gene 160760 Human Q8NI37
Background:	The function of this protein remains unknown.
Synonyms:	TA-PP2C; TAPP2C
Note:	Immunogen sequence homology: Dog: 100%; Pig: 100%; Rat: 100%; Horse: 100%; Human: 100%; Mouse: 100%; Bovine: 100%; Rabbit: 100%; Zebrafish: 100%; Guinea pig: 100%
Protein Families:	Druggable Genome, Phosphatase



[View online »](#)

Product images:



Host: Rabbit

Target Name: PPTC7

Sample Tissue: MDA-MB-435s Cell Lysate

Antibody Dilution: 1.0 μ g/ml

Host: Rabbit; Target Name: PPTC7; Sample
Tissue: MDA-MB-435S Whole Cell lysates;
Antibody Dilution: 1.0 μ g/ml