

## Product datasheet for **TA331654**

### BTBD16 Rabbit Polyclonal Antibody

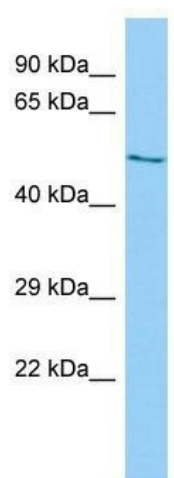
#### Product data:

Product Type:	Primary Antibodies
Applications:	WB
Recommended Dilution:	WB
Reactivity:	Human
Host:	Rabbit
Isotype:	IgG
Clonality:	Polyclonal
Immunogen:	The immunogen for Anti-BTBD16 Antibody is: synthetic peptide directed towards the N-terminal region of Human BTBD16. Synthetic peptide located within the following region: TLAKLYLKALAQGTTTHPLRELEELLRAQSPKKTKEKSPAKRIIISLKIND
Formulation:	Liquid. Purified antibody supplied in 1x PBS buffer with 0.09% (w/v) sodium azide and 2% sucrose. <i>Note that this product is shipped as lyophilized powder to China customers.</i>
Conjugation:	Unconjugated
Storage:	Store at -20°C as received.
Stability:	Stable for 12 months from date of receipt.
Predicted Protein Size:	56 kDa
Gene Name:	BTB domain containing 16
Database Link:	<a href="#">NP_653188</a> <a href="#">Entrez Gene 118663 Human</a> <a href="#">Q32M84</a>
Background:	The function of this protein remains unknown.
Synonyms:	C10orf87
Note:	Immunogen sequence homology: Human: 100%; Pig: 92%; Yeast: 92%; Guinea pig: 92%



[View online »](#)

## Product images:



Host: Rabbit; Target Name: BTBD16; Sample  
Tissue: 721\_B Whole Cell lysates; Antibody  
Dilution: 1.0ug/ml