

Product datasheet for **TA331653**

SCLT1 Rabbit Polyclonal Antibody

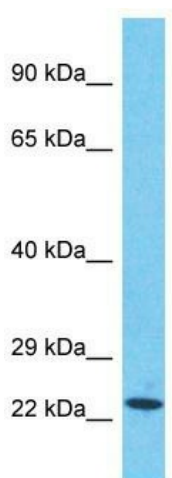
Product data:

Product Type:	Primary Antibodies
Applications:	WB
Recommended Dilution:	WB
Reactivity:	Human
Host:	Rabbit
Isotype:	IgG
Clonality:	Polyclonal
Immunogen:	The immunogen for Anti-SCLT1 Antibody is: synthetic peptide directed towards the C-terminal region of Human SCLT1. Synthetic peptide located within the following region: SRQKLHTQELLSQLEMANEKVAENEKLLILEHQEKANRLQRRLSQAEEERAA
Formulation:	Liquid. Purified antibody supplied in 1x PBS buffer with 0.09% (w/v) sodium azide and 2% sucrose.
Conjugation:	Unconjugated
Storage:	Store at -20°C as received.
Stability:	Stable for 12 months from date of receipt.
Predicted Protein Size:	19 kDa
Gene Name:	sodium channel and clathrin linker 1
Database Link:	NP_653244 Entrez Gene 132320 Human Q96NL6
Background:	SCLT1 acts as a linker protein between the voltage-gated sodium channel Na(v)1.8 and clathrin.
Synonyms:	CAP-1A; CAP1A
Note:	Immunogen sequence homology: Dog: 100%; Rat: 100%; Horse: 100%; Human: 100%; Mouse: 100%; Rabbit: 100%; Pig: 93%; Guinea pig: 93%



[View online »](#)

Product images:



Host: Rabbit
Target Name: SCLT1
Sample Tissue: HepG2 Cell Lysate
Antibody Dilution: 1.0 μ g/ml

Host: Rabbit; Target Name: SCLT1; Sample
Tissue: HepG2 Whole Cell lysates; Antibody
Dilution: 1.0ug/ml