

Product datasheet for **TA331652**

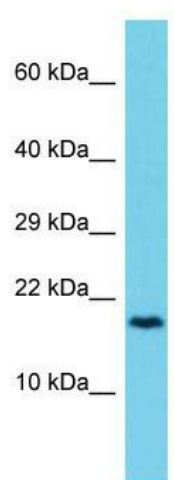
CCDC12 Rabbit Polyclonal Antibody

Product data:

Product Type:	Primary Antibodies
Applications:	WB
Recommended Dilution:	WB
Reactivity:	Human
Host:	Rabbit
Isotype:	IgG
Clonality:	Polyclonal
Immunogen:	The immunogen for Anti-CCDC12 Antibody is: synthetic peptide directed towards the C-terminal region of Human CCDC12. Synthetic peptide located within the following region: EQLEAAKPEPVIEEVDLANLAPRKPDWDLKRDVAKKLEKLRKRTQRAIAE
Formulation:	Liquid. Purified antibody supplied in 1x PBS buffer with 0.09% (w/v) sodium azide and 2% sucrose. <i>Note that this product is shipped as lyophilized powder to China customers.</i>
Conjugation:	Unconjugated
Storage:	Store at -20°C as received.
Stability:	Stable for 12 months from date of receipt.
Predicted Protein Size:	18 kDa
Gene Name:	coiled-coil domain containing 12
Database Link:	NP_653317 Entrez Gene 151903 Human Q8WUD4
Background:	The function of this protein remains unknown.
Synonyms:	FLJ39430; FLJ40801; MGC23918
Note:	Immunogen sequence homology: Human: 100%; Dog: 93%; Pig: 93%; Rat: 93%; Horse: 93%; Mouse: 93%; Bovine: 93%; Rabbit: 93%; Guinea pig: 93%; Zebrafish: 79%
Protein Pathways:	Spliceosome



[View online »](#)

Product images:

Host: Rabbit; Target Name: CCDC12; Sample
Tissue: 721_B Whole Cell lysates; Antibody
Dilution: 1.0ug/ml