

Product datasheet for **TA331651**

SMCR8 Rabbit Polyclonal Antibody

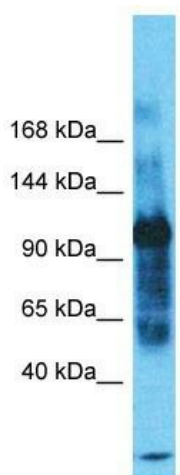
Product data:

Product Type:	Primary Antibodies
Applications:	WB
Recommended Dilution:	WB
Reactivity:	Human
Host:	Rabbit
Isotype:	IgG
Clonality:	Polyclonal
Immunogen:	The immunogen for Anti-SMCR8 Antibody is: synthetic peptide directed towards the C-terminal region of Human SMCR8. Synthetic peptide located within the following region: STYYLHVQSMLTQLCSKAFLYTFCHHLHLPHTHDKETEELVASRQMSFLKL
Formulation:	Liquid. Purified antibody supplied in 1x PBS buffer with 0.09% (w/v) sodium azide and 2% sucrose.
Conjugation:	Unconjugated
Storage:	Store at -20°C as received.
Stability:	Stable for 12 months from date of receipt.
Predicted Protein Size:	937 kDa
Gene Name:	Smith-Magenis syndrome chromosome region, candidate 8
Database Link:	NP_658988 Entrez Gene 140775 Human Q8TEV9
Background:	The function of this protein remains unknown.
Synonyms:	FLJ34716; FLJ60657
Note:	Immunogen sequence homology: Human: 100%; Dog: 93%; Horse: 93%; Rat: 79%; Rabbit: 79%



[View online »](#)

Product images:



Host: Rabbit
Target Name: SMCR8
Sample Tissue: THP-1 Cell Lysate
Antibody Dilution: 1.0µg/ml

Host: Rabbit; Target Name: SMCR8; Sample
Tissue: THP-1 Whole Cell lysates; Antibody
Dilution: 1.0ug/ml