

Product datasheet for **TA331649**

SPATS1 Rabbit Polyclonal Antibody

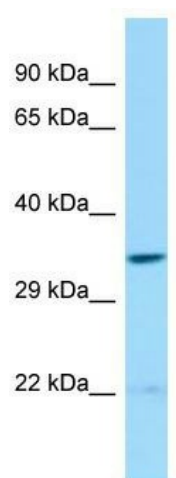
Product data:

Product Type:	Primary Antibodies
Applications:	WB
Recommended Dilution:	WB
Reactivity:	Human
Host:	Rabbit
Isotype:	IgG
Clonality:	Polyclonal
Immunogen:	The immunogen for Anti-SPATS1 Antibody is: synthetic peptide directed towards the N-terminal region of Human SPATS1. Synthetic peptide located within the following region: STTCGRQLEKVPEKRDSGMTEVERTYSANCSDFLESKGCFANTTPSGKSV
Formulation:	Liquid. Purified antibody supplied in 1x PBS buffer with 0.09% (w/v) sodium azide and 2% sucrose.
Conjugation:	Unconjugated
Storage:	Store at -20°C as received.
Stability:	Stable for 12 months from date of receipt.
Predicted Protein Size:	33 kDa
Gene Name:	spermatogenesis associated serine rich 1
Database Link:	NP_659463 Entrez Gene 221409 Human Q496A3
Background:	The function of this protein remains unknown.
Synonyms:	DDIP; SPATA8; SRSP1
Note:	Immunogen sequence homology: Human: 100%; Dog: 85%; Horse: 85%



[View online »](#)

Product images:



Host: Rabbit; Target Name: SPATS1; Sample
Tissue: 721_B Whole Cell lysates; Antibody
Dilution: 1.0ug/ml