

Product datasheet for **TA331648**

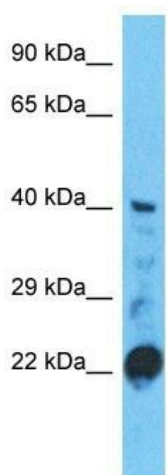
STAC3 Rabbit Polyclonal Antibody

Product data:

Product Type:	Primary Antibodies
Applications:	WB
Recommended Dilution:	WB
Reactivity:	Human
Host:	Rabbit
Isotype:	IgG
Clonality:	Polyclonal
Immunogen:	The immunogen for Anti-STAC3 Antibody is: synthetic peptide directed towards the C-terminal region of Human STAC3. Synthetic peptide located within the following region: RPEGKPQDGNPEGDKKAEEKTPDDKHKQPGFQQSHYFVALYRFKALEKD
Formulation:	Liquid. Purified antibody supplied in 1x PBS buffer with 0.09% (w/v) sodium azide and 2% sucrose.
Conjugation:	Unconjugated
Storage:	Store at -20°C as received.
Stability:	Stable for 12 months from date of receipt.
Predicted Protein Size:	41 kDa
Gene Name:	SH3 and cysteine rich domain 3
Database Link:	NP_659501 Entrez Gene 246329 Human Q96MF2
Background:	The function of this protein remains unknown.
Synonyms:	NAM
Note:	Immunogen sequence homology: Dog: 100%; Pig: 100%; Rat: 100%; Horse: 100%; Human: 100%; Bovine: 100%; Rabbit: 100%; Guinea pig: 100%; Mouse: 93%



[View online »](#)

Product images:

Host: Rabbit
Target Name: STAC3
Sample Tissue: HepG2 Cell Lysate
Antibody Dilution: 1.0 μ g/ml

Host: Rabbit; Target Name: STAC3; Sample Tissue: HepG2 Whole Cell lysates; Antibody Dilution: 1.0ug/ml