

Product datasheet for **TA331645**

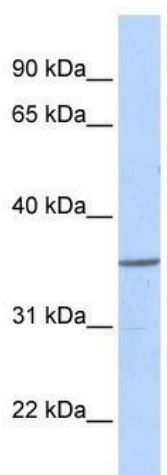
ZNF688 Rabbit Polyclonal Antibody

Product data:

Product Type:	Primary Antibodies
Applications:	WB
Recommended Dilution:	WB
Reactivity:	Human
Host:	Rabbit
Isotype:	IgG
Clonality:	Polyclonal
Immunogen:	The immunogen for Anti-ZNF688 Antibody: synthetic peptide directed towards the middle region of human ZNF688. Synthetic peptide located within the following region: NRKEEPEEVPRAKGPRKAPVKESPEVLVERNPDPAISVAPARAQPPKNA
Formulation:	Liquid. Purified antibody supplied in 1x PBS buffer with 0.09% (w/v) sodium azide and 2% sucrose. <i>Note that this product is shipped as lyophilized powder to China customers.</i>
Conjugation:	Unconjugated
Storage:	Store at -20°C as received.
Stability:	Stable for 12 months from date of receipt.
Predicted Protein Size:	30 kDa
Gene Name:	zinc finger protein 688
Database Link:	NP_660314 Entrez Gene 146542 Human P0C7X2
Background:	The function of Anti-ZNF688 has not yet been determined
Synonyms:	MGC13138; OTTHUMP00000163244; zinc finger protein 688
Note:	Immunogen sequence homology: Human: 100%
Protein Families:	Transcription Factors



[View online »](#)

Product images:


WB Suggested Anti-ZNF688 Antibody Titration:
0.2-1 ug/ml; ELISA Titer: 1: 12500; Positive
Control: Human heart