

Product datasheet for **TA331644**

NKX2.3 (NKX2-3) Rabbit Polyclonal Antibody

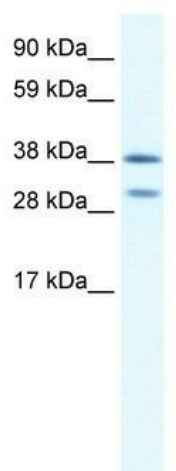
Product data:

Product Type:	Primary Antibodies
Applications:	WB
Recommended Dilution:	WB
Reactivity:	Mouse, Human
Host:	Rabbit
Isotype:	IgG
Clonality:	Polyclonal
Immunogen:	The immunogen for Anti-NKX2-3 Antibody: synthetic peptide directed towards the N terminal of human NKX2-3. Synthetic peptide located within the following region: ADLEHHFHSAPCMLAAAEGTQFSDGGEEDEEDEGEKLSYLNSLAAADGHG
Formulation:	Liquid. Purified antibody supplied in 1x PBS buffer with 0.09% (w/v) sodium azide and 2% sucrose. <i>Note that this product is shipped as lyophilized powder to China customers.</i>
Conjugation:	Unconjugated
Storage:	Store at -20°C as received.
Stability:	Stable for 12 months from date of receipt.
Predicted Protein Size:	32 kDa
Gene Name:	NK2 homeobox 3
Database Link:	NP_660328 Entrez Gene 18089 Mouse Entrez Gene 159296 Human Q8TAU0
Background:	NKX2C is a member of the NKX family of homeodomain-containing transcription factors, which are implicated in many aspects of cell type specification and maintenance of differentiated tissue functions.
Synonyms:	CSX3; NK2.3; NKX2.3; NKX2C; NKX4-3
Note:	Immunogen sequence homology: Human: 100%; Dog: 93%; Pig: 93%; Rat: 93%; Mouse: 93%; Bovine: 93%; Rabbit: 93%; Guinea pig: 93%; Horse: 86%
Protein Families:	Transcription Factors



[View online »](#)

Product images:



WB Suggested Anti-NKX2-3 Antibody Titration:
0.25ug/ml; Positive Control: Human Spleen