

Product datasheet for **TA331643**

AFG1L Rabbit Polyclonal Antibody

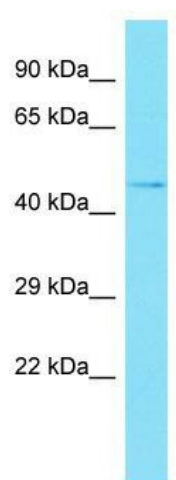
Product data:

Product Type:	Primary Antibodies
Applications:	WB
Recommended Dilution:	WB
Reactivity:	Human
Host:	Rabbit
Isotype:	IgG
Clonality:	Polyclonal
Immunogen:	The immunogen for Anti-LACE1 Antibody is: synthetic peptide directed towards the C-terminal region of Human LACE1. Synthetic peptide located within the following region: MDDLGLSQDSAEGLSMFTGEEEEIFAFQRTISRLTEMQTEQYWNEGDRTRK
Formulation:	Liquid. Purified antibody supplied in 1x PBS buffer with 0.09% (w/v) sodium azide and 2% sucrose. <i>Note that this product is shipped as lyophilized powder to China customers.</i>
Conjugation:	Unconjugated
Storage:	Store at -20°C as received.
Stability:	Stable for 12 months from date of receipt.
Predicted Protein Size:	53 kDa
Gene Name:	lactation elevated 1
Database Link:	NP_660358 Entrez Gene 246269 Human Q8WV93
Background:	This gene encodes a protein with possible ATPase function. The protein contains a P-loop motif and a five-domain structure that is conserved in fly, yeast, and bacteria. Two conserved estrogen receptor binding sites are located within 2.5 kb of this gene.
Synonyms:	AFG1
Note:	Immunogen sequence homology: Human: 100%; Dog: 93%; Horse: 93%; Bovine: 93%; Rabbit: 93%; Zebrafish: 82%; Pig: 79%; Rat: 79%; Mouse: 79%; Guinea pig: 79%



[View online »](#)

Product images:



Host: Rabbit; Target Name: LACE1; Sample
Tissue: HT1080 Whole Cell lysates; Antibody
Dilution: 1.0ug/ml