

Product datasheet for **TA331641**

Ggact Rabbit Polyclonal Antibody

Product data:

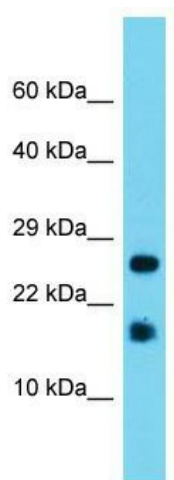
Product Type:	Primary Antibodies
Applications:	WB
Recommended Dilution:	WB
Reactivity:	Mouse
Host:	Rabbit
Isotype:	IgG
Clonality:	Polyclonal
Immunogen:	The immunogen for Anti-A2Id1 Antibody is: synthetic peptide directed towards the C-terminal region of Mouse A2Id1. Synthetic peptide located within the following region: WEGDGDGPGDSVQCFFVYTTATYAPEWLFPLPYHESYDSEGPLRLRYNPENR
Formulation:	Liquid. Purified antibody supplied in 1x PBS buffer with 0.09% (w/v) sodium azide and 2% sucrose. <i>Note that this product is shipped as lyophilized powder to China customers.</i>
Conjugation:	Unconjugated
Storage:	Store at -20°C as received.
Stability:	Stable for 12 months from date of receipt.
Predicted Protein Size:	16 kDa
Gene Name:	gamma-glutamylamine cyclotransferase
Database Link:	NP_663441 Entrez Gene 223267 Mouse Q923B0
Background:	Contributes to degradation of proteins cross-linked by transglutaminases. Degrades the cross-link between a lysine and a glutamic acid residue from two proteins that have been cross-linked by transglutaminases. Catalyzes the formation of 5-oxoproline from L-gamma-glutamyl-L-epsilon-lysine. Inactive with L-gamma-glutamyl-alpha-amino acid substrates such as L-gamma-glutamyl-L-alpha-cysteine and L-gamma-glutamyl-L-alpha-alanine.
Synonyms:	A2Id1; RGD1304748



[View online »](#)

Note: Immunogen sequence homology: Dog: 100%; Pig: 100%; Rat: 100%; Human: 100%; Mouse: 100%; Guinea pig: 100%; Rabbit: 93%; Horse: 86%; Bovine: 86%

Product images:



Host: Rabbit; Target Name: A2ld1; Sample Tissue: Mouse Liver lysates; Antibody Dilution: 1.0ug/ml