

Product datasheet for TA331637

Lass5 (CERS5) Rabbit Polyclonal Antibody

Product data:

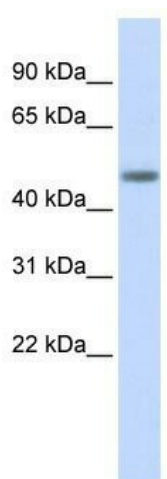
Product Type:	Primary Antibodies
Applications:	WB
Recommended Dilution:	WB
Reactivity:	Human
Host:	Rabbit
Isotype:	IgG
Clonality:	Polyclonal
Immunogen:	The immunogen for Anti-LASS5 Antibody: synthetic peptide directed towards the N terminal of human LASS5. Synthetic peptide located within the following region: CALCIGIEDSGPYQAQPNAILEKVFISITKYPDKKRLEGLSKQLDWNVRK
Formulation:	Liquid. Purified antibody supplied in 1x PBS buffer with 0.09% (w/v) sodium azide and 2% sucrose. <i>Note that this product is shipped as lyophilized powder to China customers.</i>
Conjugation:	Unconjugated
Storage:	Store at -20°C as received.
Stability:	Stable for 12 months from date of receipt.
Predicted Protein Size:	46 kDa
Gene Name:	ceramide synthase 5
Database Link:	NP_671723 Entrez Gene 91012 Human Q8N5B7
Background:	LASS5 may be either a bona fide (dihydro)ceramide synthase or a modulator of its activity. When it is overexpressed in cells it is involved in the production of sphingolipids containing mainly only one fatty acid donor (N-linked palmitoyl- (C16) ceramide) in a fumonisin B1-independent manner
Synonyms:	LASS5; Trh4
Note:	Immunogen sequence homology: Human: 100%; Rabbit: 100%; Pig: 93%; Bovine: 93%; Guinea pig: 93%; Horse: 86%; Dog: 79%; Rat: 79%



[View online »](#)

Protein Families: Transcription Factors, Transmembrane

Product images:



WB Suggested Anti-LASS5 Antibody Titration: 0.2-1 ug/ml; ELISA Titer: 1: 62500; Positive Control: Human Pancreas