

Product datasheet for **TA331635**

PEAMT (PEMT) Rabbit Polyclonal Antibody

Product data:

Product Type:	Primary Antibodies
Applications:	WB
Recommended Dilution:	WB
Reactivity:	Rat, Human
Host:	Rabbit
Isotype:	IgG
Clonality:	Polyclonal
Immunogen:	The immunogen for Anti-PEMT Antibody: synthetic peptide directed towards the C terminal of human PEMT. Synthetic peptide located within the following region: GWAIMHASPTGLLLTVLVALTYIVALLYEEPFTAETIYRQKASGSHKRS
Formulation:	Liquid. Purified antibody supplied in 1x PBS buffer with 0.09% (w/v) sodium azide and 2% sucrose. <i>Note that this product is shipped as lyophilized powder to China customers.</i>
Conjugation:	Unconjugated
Storage:	Store at -20°C as received.
Stability:	Stable for 12 months from date of receipt.
Predicted Protein Size:	26 kDa
Gene Name:	phosphatidylethanolamine N-methyltransferase
Database Link:	NP_680477 Entrez Gene 25511 Rat Entrez Gene 10400 Human Q9UBM1
Background:	PEMT is an enzyme which converts phosphatidylethanolamine to phosphatidylcholine by sequential methylation in the liver. The protein localizes to the endoplasmic reticulum and mitochondria-associated membranes. The gene encodes PEMT protein is within the Smith-Magenis syndrome region on chromosome 17. This gene encodes an enzyme which converts phosphatidylethanolamine to phosphatidylcholine by sequential methylation in the liver. The protein localizes to the endoplasmic reticulum and mitochondria-associated membranes. The gene is within the Smith-Magenis syndrome region on chromosome 17. Alternate splicing of this gene results in three transcript variants encoding two different isoforms.



[View online »](#)

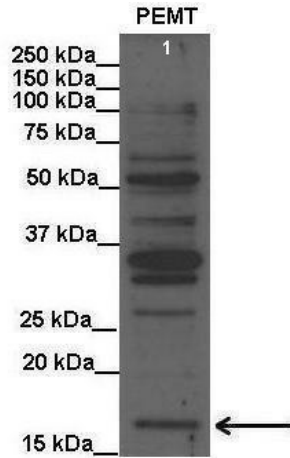
Synonyms: PEAMT; PEMPT; PEMT2; PNMT

Note: Immunogen sequence homology: Rat: 100%; Horse: 100%; Human: 100%; Mouse: 100%; Yeast: 100%; Rabbit: 100%; Bovine: 93%; Dog: 86%; Pig: 86%; Guinea pig: 83%; Zebrafish: 82%

Protein Families: Transmembrane

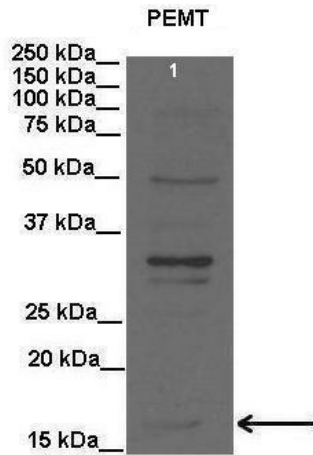
Protein Pathways: Glycerophospholipid metabolism, Metabolic pathways

Product images:



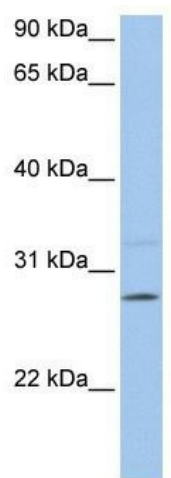
See Immunoblot 2 Data and Customer Feedback for more information

Lanes: Lane 1: 20 ug rat liver lysate; Primary Antibody Dilution: 1: 1000; Secondary Antibody: Anti-rabbit HRP; Secondary Antibody Dilution: 1: 15000; Gene Name: PEMT; Submitted by: Anonymous;



See Immunoblot 3 Data and Customer Feedback for more information

Lanes: Lane 1: 20 ug rat liver lysate; Primary Antibody Dilution: 1: 2000; Secondary Antibody: Anti-rabbit HRP; Secondary Antibody Dilution: 1: 15000; Gene Name: PEMT; Submitted by: Anonymous;



WB Suggested Anti-PEMT Antibody Titration: 0.2-1 ug/ml; Positive Control: 721_B cell lysate