

Product datasheet for **TA331634**

SMCR7 (MIEF2) Rabbit Polyclonal Antibody

Product data:

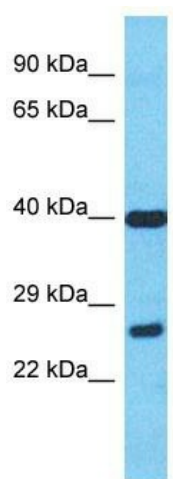
Product Type:	Primary Antibodies
Applications:	WB
Recommended Dilution:	WB
Reactivity:	Human
Host:	Rabbit
Isotype:	IgG
Clonality:	Polyclonal
Immunogen:	The immunogen for Anti-SMCR7 Antibody is: synthetic peptide directed towards the N-terminal region of Human SMCR7. Synthetic peptide located within the following region: IDRATSPRDEDDTKADSWKELSLKATPHLQPRPPPAALSQPVLPLAPSS
Formulation:	Liquid. Purified antibody supplied in 1x PBS buffer with 0.09% (w/v) sodium azide and 2% sucrose.
Conjugation:	Unconjugated
Storage:	Store at -20°C as received.
Stability:	Stable for 12 months from date of receipt.
Predicted Protein Size:	22 kDa
Gene Name:	mitochondrial elongation factor 2
Database Link:	NP_683684 Entrez Gene 125170 Human Q96C03
Background:	This gene encodes an outer mitochondrial membrane protein that functions in the regulation of mitochondrial morphology. It can directly recruit the fission mediator dynamin-related protein 1 (Drp1) to the mitochondrial surface. The gene is located within the Smith-Magenis syndrome region on chromosome 17. Alternative splicing results in multiple transcript variants encoding different isoforms.
Synonyms:	MID49; SMCR7
Note:	Immunogen sequence homology: Human: 100%; Bovine: 92%; Rat: 86%; Mouse: 86%; Dog: 85%; Pig: 79%; Guinea pig: 79%; Horse: 77%; Rabbit: 77%



[View online »](#)

Protein Families: Transmembrane

Product images:



Host: Rabbit

Target Name: SMCR7

Sample Tissue: MCF7 Cell Lysate

Antibody Dilution: 1.0µg/ml

Host: Rabbit; Target Name: SMCR7; Sample Tissue: MCF7 Whole Cell lysates; Antibody Dilution: 1.0ug/ml