

Product datasheet for TA331630

MTRFR Rabbit Polyclonal Antibody

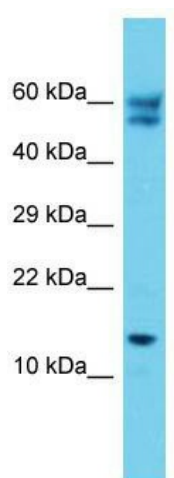
Product data:

Product Type:	Primary Antibodies
Applications:	WB
Recommended Dilution:	WB
Reactivity:	Human
Host:	Rabbit
Isotype:	IgG
Clonality:	Polyclonal
Immunogen:	The immunogen for Anti-C12orf65 Antibody is: synthetic peptide directed towards the C-terminal region of Human C12orf65. Synthetic peptide located within the following region: HIPSGIVVKCHQTRSVDQNRKLARKILQEKVDVFNGENSPVHKEKREAA
Formulation:	Liquid. Purified antibody supplied in 1x PBS buffer with 0.09% (w/v) sodium azide and 2% sucrose.
Conjugation:	Unconjugated
Storage:	Store at -20°C as received.
Stability:	Stable for 12 months from date of receipt.
Predicted Protein Size:	18 kDa
Gene Name:	chromosome 12 open reading frame 65
Database Link:	NP_689482 Entrez Gene 91574 Human Q9H3J6
Background:	This nuclear gene encodes a mitochondrial matrix protein that appears to contribute to peptide chain termination in the mitochondrial translation machinery. Two different 1 bp deletions (resulting in the same premature stop codon) result in decreased mitochondrial translation, decreased levels of oxidative phosphorylation complexes and encephalomyopathy. Alternative splicing results in multiple transcript variants.
Synonyms:	COXPD7; SPG55
Note:	Immunogen sequence homology: Human: 100%; Mouse: 100%; Pig: 93%; Rat: 92%; Horse: 86%; Dog: 79%; Bovine: 79%; Guinea pig: 79%



[View online »](#)

Product images:



Host: Rabbit; Target Name: C12orf65; Sample
Tissue: Jurkat Whole Cell lysates; Antibody
Dilution: 1.0ug/ml