

## Product datasheet for **TA331628**

### ADA2 beta (TADA2B) Rabbit Polyclonal Antibody

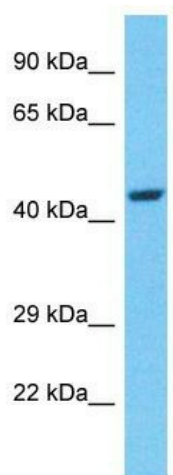
#### Product data:

Product Type:	Primary Antibodies
Applications:	WB
Recommended Dilution:	WB
Reactivity:	Human
Host:	Rabbit
Isotype:	IgG
Clonality:	Polyclonal
Immunogen:	The immunogen for Anti-TADA2B Antibody is: synthetic peptide directed towards the C-terminal region of Human TADA2B. Synthetic peptide located within the following region: RKENKNLAGSKRGKEDGKDSEFAAIENLPGFELLSDREKVLCSNLSPA
Formulation:	Liquid. Purified antibody supplied in 1x PBS buffer with 0.09% (w/v) sodium azide and 2% sucrose.
Conjugation:	Unconjugated
Storage:	Store at -20°C as received.
Stability:	Stable for 12 months from date of receipt.
Predicted Protein Size:	46 kDa
Gene Name:	transcriptional adaptor 2B
Database Link:	<a href="#">NP_689506</a> <a href="#">Entrez Gene 93624 Human</a> <a href="#">Q86TJ2</a>
Background:	TADA2B functions as a transcriptional adaptor protein that potentiates transcription through coordination of histone acetyltransferase (HAT) activity and by linking activation factors to basal transcriptional machinery.
Synonyms:	ADA2(beta); ADA2B
Note:	Immunogen sequence homology: Human: 100%; Pig: 93%; Rat: 93%; Horse: 93%; Mouse: 93%; Guinea pig: 93%; Dog: 86%; Bovine: 77%



[View online »](#)

## Product images:



Host: Rabbit  
Target Name: TADA2B  
Sample Tissue: MCF7 Cell Lysate  
Antibody Dilution: 1.0µg/ml

Host: Rabbit; Target Name: TADA2B; Sample  
Tissue: MCF7 Whole Cell lysates; Antibody  
Dilution: 1.0ug/ml