

Product datasheet for **TA331627**

TARS3 Rabbit Polyclonal Antibody

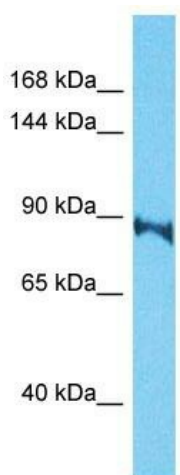
Product data:

Product Type:	Primary Antibodies
Applications:	WB
Recommended Dilution:	WB
Reactivity:	Human
Host:	Rabbit
Isotype:	IgG
Clonality:	Polyclonal
Immunogen:	The immunogen for Anti-TARSL2 Antibody is: synthetic peptide directed towards the C-terminal region of Human TARSL2. Synthetic peptide located within the following region: TYVSKDGDDKKRPVIIHRAILGSVERMIAILSENYGGKWPFWLSPRQVMV
Formulation:	Liquid. Purified antibody supplied in 1x PBS buffer with 0.09% (w/v) sodium azide and 2% sucrose. <i>Note that this product is shipped as lyophilized powder to China customers.</i>
Conjugation:	Unconjugated
Storage:	Store at -20°C as received.
Stability:	Stable for 12 months from date of receipt.
Predicted Protein Size:	88 kDa
Gene Name:	threonyl-tRNA synthetase-like 2
Database Link:	NP_689547 Entrez Gene 123283 Human A2RTX5
Background:	The function of this protein remains unknown.
Synonyms:	FLJ25005
Note:	Immunogen sequence homology: Pig: 100%; Rat: 100%; Human: 100%; Rabbit: 100%; Guinea pig: 100%; Horse: 93%; Mouse: 93%; Bovine: 93%; Dog: 86%; Zebrafish: 86%
Protein Pathways:	Aminoacyl-tRNA biosynthesis



[View online »](#)

Product images:



Host: Rabbit
Target Name: TARSL2
Sample Tissue: HepG2 Cell Lysate
Antibody Dilution: 1.0µg/ml

Host: Rabbit; Target Name: TARSL2; Sample
Tissue: HepG2 Whole Cell lysates; Antibody
Dilution: 1.0ug/ml