

## Product datasheet for **TA331626**

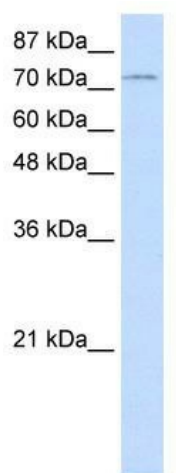
### ZNF441 Rabbit Polyclonal Antibody

#### Product data:

Product Type:	Primary Antibodies
Applications:	WB
Recommended Dilution:	WB
Reactivity:	Human
Host:	Rabbit
Isotype:	IgG
Clonality:	Polyclonal
Immunogen:	The immunogen for Anti-ZNF441 Antibody: synthetic peptide directed towards the N terminal of human ZNF441. Synthetic peptide located within the following region: MVERACEIKDNSQCGGPFTQTQDSIVNEKIPGVDPWESSECTDVL MGRSS
Formulation:	Liquid. Purified antibody supplied in 1x PBS buffer with 0.09% (w/v) sodium azide and 2% sucrose.
Conjugation:	Unconjugated
Storage:	Store at -20°C as received.
Stability:	Stable for 12 months from date of receipt.
Predicted Protein Size:	72 kDa
Gene Name:	zinc finger protein 441
Database Link:	<a href="#">NP_689568</a> <a href="#">Entrez Gene 126068 Human</a> <a href="#">Q8N8Z8</a>
Background:	ZNF441 contains 19 C2H2-type zinc fingers and belongs to the krueppel C2H2-type zinc-finger protein family. It may be involved in transcriptional regulation.
Synonyms:	FLJ38637
Note:	Immunogen sequence homology: Human: 100%



[View online »](#)

**Product images:**


WB Suggested Anti-ZNF441 Antibody Titration:  
1.25ug/ml; Positive Control: Jurkat cell lysate