

## Product datasheet for **TA331624**

### PM20D1 Rabbit Polyclonal Antibody

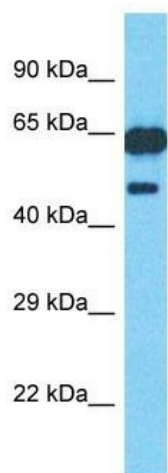
#### Product data:

Product Type:	Primary Antibodies
Applications:	WB
Recommended Dilution:	WB
Reactivity:	Human
Host:	Rabbit
Isotype:	IgG
Clonality:	Polyclonal
Immunogen:	The immunogen for Anti-PM20D1 Antibody is: synthetic peptide directed towards the N-terminal region of Human PM20D1. Synthetic peptide located within the following region: SMGPRSGEHQRASRIPSQFSKEERVAMKEALKGAIQIPTVTFSSSEKSNTT
Formulation:	Liquid. Purified antibody supplied in 1x PBS buffer with 0.09% (w/v) sodium azide and 2% sucrose.
Conjugation:	Unconjugated
Storage:	Store at -20°C as received.
Stability:	Stable for 12 months from date of receipt.
Predicted Protein Size:	55 kDa
Gene Name:	peptidase M20 domain containing 1
Database Link:	<a href="#">NP_689704</a> <a href="#">Entrez Gene 148811 Human</a> <a href="#">Q6GTS8</a>
Background:	The function of this protein remains unknown.
Synonyms:	Cps1
Note:	Immunogen sequence homology: Human: 100%; Pig: 91%; Guinea pig: 91%
Protein Families:	Transmembrane



[View online »](#)

## Product images:



Host: Rabbit  
Target Name: PM20D1  
Sample Tissue: 293T Cell Lysate  
Antibody Dilution: 1.0 $\mu$ g/ml

Host: Rabbit; Target Name: PM20D1; Sample  
Tissue: 293T Whole Cell lysates; Antibody  
Dilution: 1.0ug/ml