

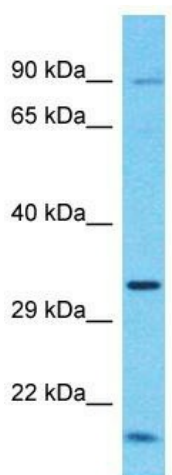
Product datasheet for TA331623

DYNLT5 Rabbit Polyclonal Antibody

Product data:

Product Type:	Primary Antibodies
Applications:	WB
Recommended Dilution:	WB
Reactivity:	Human
Host:	Rabbit
Isotype:	IgG
Clonality:	Polyclonal
Immunogen:	The immunogen for Anti-TCTEX1D1 Antibody is: synthetic peptide directed towards the N-terminal region of Human TCTEX1D1. Synthetic peptide located within the following region: KKRGSISSLSNHEFWRKEIHGRIKDSMSTVSYMEEPSQRDDISRLTVQME
Formulation:	Liquid. Purified antibody supplied in 1x PBS buffer with 0.09% (w/v) sodium azide and 2% sucrose.
Conjugation:	Unconjugated
Storage:	Store at -20°C as received.
Stability:	Stable for 12 months from date of receipt.
Predicted Protein Size:	19 kDa
Gene Name:	Tctex1 domain containing 1
Database Link:	NP_689878 Entrez Gene 200132 Human Q8N7M0
Background:	The function of this protein remains unknown.
Synonyms:	RP11-266I14.2
Note:	Immunogen sequence homology: Human: 100%; Rabbit: 86%; Pig: 79%; Rat: 79%; Guinea pig: 79%; Dog: 77%


[View online »](#)

Product images:

Host: Rabbit

Target Name: TCTEX1D1

Sample Tissue: HCT15 Cell Lysate

Antibody Dilution: 1.0µg/ml

Host: Rabbit; Target Name: TCTEX1D1; Sample
Tissue: HCT15 Whole Cell lysates; Antibody
Dilution: 1.0ug/ml