

Product datasheet for **TA331620**

SPATIAL (TBATA) Rabbit Polyclonal Antibody

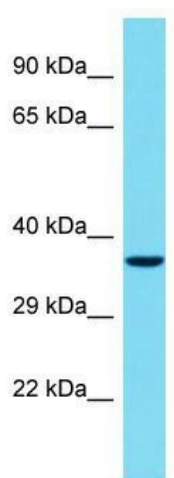
Product data:

Product Type:	Primary Antibodies
Applications:	WB
Recommended Dilution:	WB
Reactivity:	Human
Host:	Rabbit
Isotype:	IgG
Clonality:	Polyclonal
Immunogen:	The immunogen for Anti-TBATA Antibody is: synthetic peptide directed towards the C-terminal region of Human TBATA. Synthetic peptide located within the following region: EPPCSQSPKTKISPFTKSEKPEYIGEAQVLQMHSQNTEKKTSPRAES
Formulation:	Liquid. Purified antibody supplied in 1x PBS buffer with 0.09% (w/v) sodium azide and 2% sucrose. <i>Note that this product is shipped as lyophilized powder to China customers.</i>
Conjugation:	Unconjugated
Storage:	Store at -20°C as received.
Stability:	Stable for 12 months from date of receipt.
Predicted Protein Size:	39 kDa
Gene Name:	thymus, brain and testes associated
Database Link:	NP_689923 Entrez Gene 219793 Human Q96M53
Background:	TBATA may play a role in spermatid differentiation. It modulates thymic stromal cell proliferation and thymus function.
Synonyms:	C10orf27; SPATIAL
Note:	Immunogen sequence homology: Human: 100%



[View online »](#)

Product images:



Host: Rabbit; Target Name: TBATA; Sample
Tissue: Jurkat Whole Cell lysates; Antibody
Dilution: 1.0ug/ml