

Product datasheet for **TA331619**

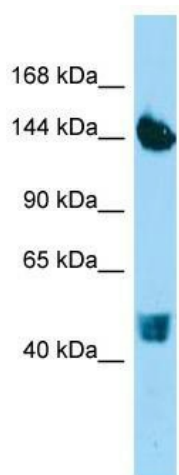
COL22A1 Rabbit Polyclonal Antibody

Product data:

Product Type:	Primary Antibodies
Applications:	WB
Recommended Dilution:	WB
Reactivity:	Human
Host:	Rabbit
Isotype:	IgG
Clonality:	Polyclonal
Immunogen:	The immunogen for Anti-COL22A1 Antibody is: synthetic peptide directed towards the N-terminal region of Human COL22A1. Synthetic peptide located within the following region: VKEILGKRENGAQSSYVRMGSPVQSTEDVFPQGLPDEYAFVTTFRFRK
Formulation:	Liquid. Purified antibody supplied in 1x PBS buffer with 0.09% (w/v) sodium azide and 2% sucrose. <i>Note that this product is shipped as lyophilized powder to China customers.</i>
Conjugation:	Unconjugated
Storage:	Store at -20°C as received.
Stability:	Stable for 12 months from date of receipt.
Predicted Protein Size:	161 kDa
Gene Name:	collagen type XXII alpha 1
Database Link:	NP_690848 Entrez Gene 169044 Human Q8NFW1
Background:	COL22A1, a member of the FACIT (fibrillar-associated collagens with interrupted triple helices) subgroup of the collagen protein family, specifically localizes to tissue junctions.
Synonyms:	alpha 1; collagen; type XXII
Note:	Immunogen sequence homology: Pig: 100%; Rat: 100%; Horse: 100%; Human: 100%; Mouse: 100%; Guinea pig: 100%; Bovine: 92%; Rabbit: 86%; Dog: 79%



[View online »](#)

Product images:

Host: Rabbit; Target Name: COL22A1; Sample
Tissue: HepG2 Whole Cell lysates; Antibody
Dilution: 1.0ug/ml