

## Product datasheet for **TA331618**

### PRSS33 Rabbit Polyclonal Antibody

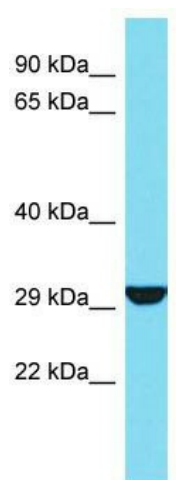
#### Product data:

Product Type:	Primary Antibodies
Applications:	WB
Recommended Dilution:	WB
Reactivity:	Human
Host:	Rabbit
Isotype:	IgG
Clonality:	Polyclonal
Immunogen:	The immunogen for Anti-PRSS33 Antibody is: synthetic peptide directed towards the C-terminal region of Human PRSS33. Synthetic peptide located within the following region: GYPQGHKDACQGDSGGPLTCLQSGSWVLVGVSWGKGCALPNRPGVYTSV
Formulation:	Liquid. Purified antibody supplied in 1x PBS buffer with 0.09% (w/v) sodium azide and 2% sucrose. <i>Note that this product is shipped as lyophilized powder to China customers.</i>
Conjugation:	Unconjugated
Storage:	Store at -20°C as received.
Stability:	Stable for 12 months from date of receipt.
Predicted Protein Size:	31 kDa
Gene Name:	protease, serine 33
Database Link:	<a href="#">NP_690851</a> <a href="#">Entrez Gene 260429 Human</a> <a href="#">Q8NF86</a>
Background:	PRSS33 is a Serine protease that has amidolytic activity, cleaving its substrates before Arg residues.
Synonyms:	EOS
Note:	Immunogen sequence homology: Rat: 100%; Human: 100%; Mouse: 100%; Dog: 92%; Pig: 92%; Horse: 92%; Bovine: 92%; Rabbit: 92%; Guinea pig: 92%
Protein Families:	Druggable Genome, Protease



[View online »](#)

**Product images:**



Host: Rabbit; Target Name: PRSS33; Sample  
Tissue: 721\_B Whole Cell lysates; Antibody  
Dilution: 1.0ug/ml