

## Product datasheet for TA331617

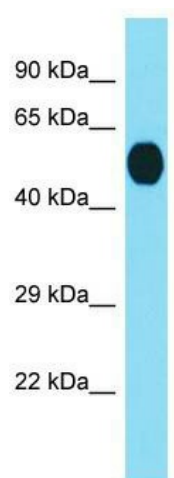
### Rtp3 Rabbit Polyclonal Antibody

#### Product data:

Product Type:	Primary Antibodies
Applications:	WB
Recommended Dilution:	WB
Reactivity:	Mouse
Host:	Rabbit
Isotype:	IgG
Clonality:	Polyclonal
Immunogen:	The immunogen for Anti-Rtp3 Antibody is: synthetic peptide directed towards the middle region of Mouse Rtp3. Synthetic peptide located within the following region: IPLLGNTSLEGPHDSSNCEACLLGFCAQNDLGQASKPPAPPLSPTSSKSA
Formulation:	Liquid. Purified antibody supplied in 1x PBS buffer with 0.09% (w/v) sodium azide and 2% sucrose.
Conjugation:	Unconjugated
Storage:	Store at -20°C as received.
Stability:	Stable for 12 months from date of receipt.
Predicted Protein Size:	52 kDa
Gene Name:	receptor transporter protein 3
Database Link:	<a href="#">NP_694740</a> <a href="#">Entrez Gene 235636 Mouse</a> <a href="#">Q5QGU6</a>
Background:	The function of this protein remains unknown.
Synonyms:	LTM1; TMEM7
Note:	Immunogen sequence homology: Human: 100%; Horse: 93%; Pig: 86%; Bovine: 86%; Rat: 85%; Mouse: 85%; Rabbit: 75%



[View online »](#)

**Product images:**

Host: Rabbit; Target Name: Rtp3; Sample Tissue: Mouse Brain lysates; Antibody Dilution: 1.0ug/ml