

## Product datasheet for **TA331616**

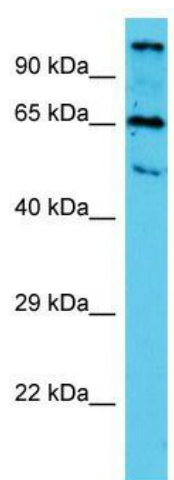
### TTLL10 Rabbit Polyclonal Antibody

#### Product data:

Product Type:	Primary Antibodies
Applications:	WB
Recommended Dilution:	WB
Reactivity:	Human
Host:	Rabbit
Isotype:	IgG
Clonality:	Polyclonal
Immunogen:	The immunogen for Anti-TTLL10 Antibody is: synthetic peptide directed towards the N-terminal region of Human TTLL10. Synthetic peptide located within the following region: ATIISYCKSKGWQRIHDSRRDDYTLKWCEVKSRDSYGSFREGEQLLYQL
Formulation:	Liquid. Purified antibody supplied in 1x PBS buffer with 0.09% (w/v) sodium azide and 2% sucrose. <i>Note that this product is shipped as lyophilized powder to China customers.</i>
Purification:	Affinity Purified
Conjugation:	Unconjugated
Storage:	Store at -20°C as received.
Stability:	Stable for 12 months from date of receipt.
Predicted Protein Size:	66 kDa
Gene Name:	tubulin tyrosine ligase like 10
Database Link:	<a href="#">NP_694986</a> <a href="#">Entrez Gene 254173 Human Q6ZVT0</a>
Background:	TTLL10 inactive polyglycylase.
Synonyms:	TTLL5
Note:	Immunogen sequence homology: Human: 100%; Yeast: 100%; Dog: 79%; Pig: 79%; Horse: 79%; Bovine: 79%; Guinea pig: 79%; Rat: 77%



[View online »](#)

**Product images:**

Host: Rabbit; Target Name: TTLL10; Sample  
Tissue: HepG2 Whole cell lysates; Antibody  
Dilution: 1.0ug/ml