

Product datasheet for **TA331615**

Synaptotagmin 14 (SYT14) Rabbit Polyclonal Antibody

Product data:

Product Type:	Primary Antibodies
Applications:	WB
Recommended Dilution:	WB
Reactivity:	Human
Host:	Rabbit
Isotype:	IgG
Clonality:	Polyclonal
Immunogen:	The immunogen for Anti-SYT14 Antibody is: synthetic peptide directed towards the middle region of Human SYT14. Synthetic peptide located within the following region: HCSNSPRCSYKCPSEGSTGHEIESFHNGYEEEDVPSDSTAVLSPEDMSA
Formulation:	Liquid. Purified antibody supplied in 1x PBS buffer with 0.09% (w/v) sodium azide and 2% sucrose.
Conjugation:	Unconjugated
Storage:	Store at -20°C as received.
Stability:	Stable for 12 months from date of receipt.
Predicted Protein Size:	62 kDa
Gene Name:	synaptotagmin 14
Database Link:	NP_694994 Entrez Gene 255928 Human Q8NB59
Background:	This gene is a member of the synaptotagmin gene family and encodes a protein similar to other family members that mediate membrane trafficking in synaptic transmission. The encoded protein is a calcium-independent synaptotagmin. Mutations in this gene are a cause of autosomal recessive spinocerebellar ataxia-11 (SCAR11), and a t(1;3) translocation of this gene has been associated with neurodevelopmental abnormalities. Alternatively spliced transcript variants encoding multiple isoforms have been observed for this gene, and a pseudogene of this gene is located on the long arm of chromosome 4.
Synonyms:	SCAR11; sytXIV

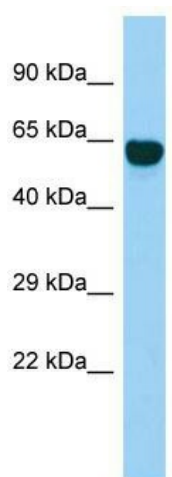


[View online »](#)

Note: Immunogen sequence homology: Dog: 100%; Pig: 100%; Horse: 100%; Human: 100%; Bovine: 100%; Zebrafish: 100%; Guinea pig: 100%; Rat: 93%; Mouse: 93%; Rabbit: 93%

Protein Families: Transmembrane

Product images:



Host: Rabbit; Target Name: SYT14; Sample Tissue: Fetal Brain lysates; Antibody Dilution: 1.0ug/ml