

Product datasheet for TA331614

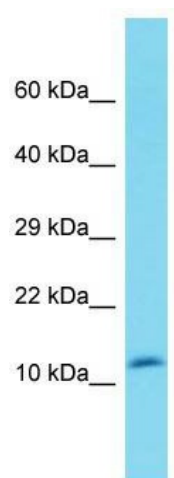
DEFB119 Rabbit Polyclonal Antibody

Product data:

Product Type:	Primary Antibodies
Applications:	WB
Recommended Dilution:	WB
Reactivity:	Human
Host:	Rabbit
Isotype:	IgG
Clonality:	Polyclonal
Immunogen:	The immunogen for Anti-DEFB119 Antibody is: synthetic peptide directed towards the N-terminal region of Human DEFB119. Synthetic peptide located within the following region: LLYLFLAILLAIEEPVISGKRHILRCMNGSGICRASCKKNEQPPLYCRNC
Formulation:	Liquid. Purified antibody supplied in 1x PBS buffer with 0.09% (w/v) sodium azide and 2% sucrose. <i>Note that this product is shipped as lyophilized powder to China customers.</i>
Conjugation:	Unconjugated
Storage:	Store at -20°C as received.
Stability:	Stable for 12 months from date of receipt.
Predicted Protein Size:	9 kDa
Gene Name:	defensin beta 119
Database Link:	NP_695021 Entrez Gene 245932 Human Q8N690
Background:	This gene encodes a member of a family of small secreted proteins. These proteins participate in immune defense against microbial infection. This gene is located in a cluster of similar genes on chromosome 20. Alternative splicing results in multiple transcript variants.
Synonyms:	DEFB-19; DEFB-20; DEFB20; DEFB120; ESC42-RELA; ESC42-RELB
Note:	Immunogen sequence homology: Human: 100%; Pig: 92%; Horse: 92%; Rat: 85%; Guinea pig: 82%; Dog: 77%
Protein Families:	Secreted Protein



[View online »](#)

Product images:

Host: Rabbit; Target Name: DEFB119; Sample
Tissue: Fetal Heart lysates; Antibody Dilution:
1.0ug/ml