

Product datasheet for TA331613

RNF19B Rabbit Polyclonal Antibody

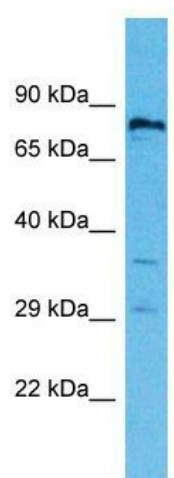
Product data:

Product Type:	Primary Antibodies
Applications:	WB
Recommended Dilution:	WB
Reactivity:	Human
Host:	Rabbit
Isotype:	IgG
Clonality:	Polyclonal
Immunogen:	The immunogen for Anti-RNF19B Antibody is: synthetic peptide directed towards the C-terminal region of Human RNF19B. Synthetic peptide located within the following region: VHAQMAENEEEGSGGGGSEEDPPCRHQSCQKDKCLASKPWDISLAQPESI
Formulation:	Liquid. Purified antibody supplied in 1x PBS buffer with 0.09% (w/v) sodium azide and 2% sucrose.
Conjugation:	Unconjugated
Storage:	Store at -20°C as received.
Stability:	Stable for 12 months from date of receipt.
Predicted Protein Size:	80 kDa
Gene Name:	ring finger protein 19B
Database Link:	NP_699172 Entrez Gene 127544 Human Q6ZMZ0
Background:	IBRDC3 is a cytolysis-associated transmembrane protein expressed in natural killer (NK) cells and T lymphocytes following cytokine stimulation.
Synonyms:	IBRDC3; NKLAM
Note:	Immunogen sequence homology: Human: 100%; Rat: 92%; Horse: 87%; Pig: 79%; Mouse: 77%; Rabbit: 77%
Protein Families:	Druggable Genome, Transmembrane



[View online »](#)

Product images:



Host: Rabbit; Target Name: RNF19B; Sample
Tissue: 721_B Whole cell lysates; Antibody
Dilution: 1.0ug/ml