

Product datasheet for TA331612

RNF19B Rabbit Polyclonal Antibody

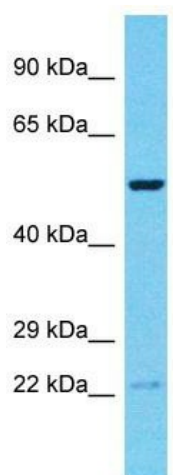
Product data:

Product Type:	Primary Antibodies
Applications:	WB
Recommended Dilution:	WB
Reactivity:	Human
Host:	Rabbit
Isotype:	IgG
Clonality:	Polyclonal
Immunogen:	The immunogen for Anti-RNF19B Antibody is: synthetic peptide directed towards the C-terminal region of Human RNF19B. Synthetic peptide located within the following region: GRKIHSRYEGRKTSKHKRNLAITGGVTLSPVIAAVSVGIGVPIMLA
Formulation:	Liquid. Purified antibody supplied in 1x PBS buffer with 0.09% (w/v) sodium azide and 2% sucrose.
Conjugation:	Unconjugated
Storage:	Store at -20°C as received.
Stability:	Stable for 12 months from date of receipt.
Predicted Protein Size:	53 kDa
Gene Name:	ring finger protein 19B
Database Link:	NP_699172 Entrez Gene 127544 Human Q6ZMZ0
Background:	IBRDC3 is a cytolysis-associated transmembrane protein expressed in natural killer (NK) cells and T lymphocytes following cytokine stimulation.
Synonyms:	IBRDC3; NKLAM
Note:	Immunogen sequence homology: Dog: 100%; Pig: 100%; Rat: 100%; Horse: 100%; Human: 100%; Mouse: 100%; Bovine: 100%; Rabbit: 100%; Guinea pig: 100%; Zebrafish: 77%
Protein Families:	Druggable Genome, Transmembrane



[View online »](#)

Product images:



Host: Rabbit
Target Name: RNF19B
Sample Tissue: Jurkat Cell Lysate
Antibody Dilution: 1.0 μ g/ml

Host: Rabbit; Target Name: RNF19B; Sample Tissue: Jurkat Whole Cell lysates; Antibody Dilution: 1.0ug/ml