

Product datasheet for **TA331611**

TAPT1 Rabbit Polyclonal Antibody

Product data:

| | |
|-------------------------|---|
| Product Type: | Primary Antibodies |
| Applications: | WB |
| Recommended Dilution: | WB |
| Reactivity: | Human |
| Host: | Rabbit |
| Isotype: | IgG |
| Clonality: | Polyclonal |
| Immunogen: | The immunogen for Anti-TAPT1 Antibody is: synthetic peptide directed towards the C-terminal region of Human TAPT1. Synthetic peptide located within the following region: KEAKMEEKLSNPPATCTPGKPSSKSQNKCKPSQGLSTEENLSASITKQPI |
| Formulation: | Liquid. Purified antibody supplied in 1x PBS buffer with 0.09% (w/v) sodium azide and 2% sucrose. <i>Note that this product is shipped as lyophilized powder to China customers.</i> |
| Conjugation: | Unconjugated |
| Storage: | Store at -20°C as received. |
| Stability: | Stable for 12 months from date of receipt. |
| Predicted Protein Size: | 62 kDa |
| Gene Name: | transmembrane anterior posterior transformation 1 |
| Database Link: | NP_699196 Entrez Gene 202018 Human Q6NXT6 |
| Background: | This gene encodes a highly conserved, putative transmembrane protein. A mutation in the mouse ortholog of this gene results in homeotic, posterior-to-anterior transformations of the axial skeleton which are similar to the phenotype of mouse homeobox C8 gene mutants. This gene is proposed to function downstream of homeobox C8 to transduce extracellular patterning information during axial skeleton development. An alternatively spliced transcript variant encoding a substantially different isoform has been described, but its biological validity has not been determined. |



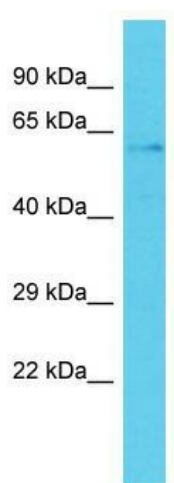
[View online »](#)

Synonyms: CMVFR

Note: Immunogen sequence homology: Human: 100%; Horse: 93%; Bovine: 93%; Dog: 86%; Mouse: 86%; Pig: 79%; Rat: 79%; Guinea pig: 79%

Protein Families: Druggable Genome, Transmembrane

Product images:



Host: Rabbit; Target Name: TAPT1; Sample Tissue: RPMI-8226 Whole Cell lysates; Antibody Dilution: 1.0ug/ml; TAPT1 is strongly supported by BioGPS gene expression data to be expressed in RPMI-8226