

Product datasheet for **TA331610**

MFSD4B Rabbit Polyclonal Antibody

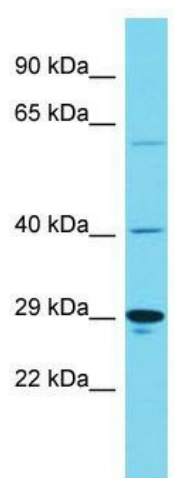
Product data:

Product Type:	Primary Antibodies
Applications:	WB
Recommended Dilution:	WB
Reactivity:	Human
Host:	Rabbit
Isotype:	IgG
Clonality:	Polyclonal
Immunogen:	The immunogen for Anti-KIAA1919 Antibody is: synthetic peptide directed towards the middle region of Human KIAA1919. Synthetic peptide located within the following region: YAVIGTYMFLVSVIFFCLFLKNSSKQEKARASAETFRRAKYHNALLCLLF
Formulation:	Liquid. Purified antibody supplied in 1x PBS buffer with 0.09% (w/v) sodium azide and 2% sucrose. <i>Note that this product is shipped as lyophilized powder to China customers.</i>
Conjugation:	Unconjugated
Storage:	Store at -20°C as received.
Stability:	Stable for 12 months from date of receipt.
Predicted Protein Size:	57 kDa
Gene Name:	major facilitator superfamily domain containing 4B
Database Link:	NP_699200 Entrez Gene 91749 Human Q5TF39
Background:	KIAA1919 may function as a sodium-dependent glucose transporter.
Synonyms:	MFSD4B; NaGLT1
Note:	Immunogen sequence homology: Human: 100%; Bovine: 86%
Protein Families:	Transmembrane



[View online »](#)

Product images:



Host: Rabbit; Target Name: KIAA1919; Sample
Tissue: HeLa Whole Cell lysates; Antibody Dilution:
1.0ug/ml