

Product datasheet for **TA331606**

GPR115 (ADGRF4) Rabbit Polyclonal Antibody

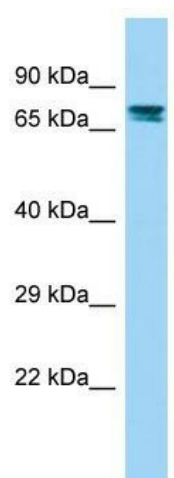
Product data:

Product Type:	Primary Antibodies
Applications:	WB
Recommended Dilution:	WB
Reactivity:	Human
Host:	Rabbit
Isotype:	IgG
Clonality:	Polyclonal
Immunogen:	The immunogen for Anti-GPR115 Antibody is: synthetic peptide directed towards the N-terminal region of Human GPR115. Synthetic peptide located within the following region: SQATMICCLVFFLSTECSHYRSKIHLKAGDKLQSPGKPKTGRIQEKCEG
Formulation:	Liquid. Purified antibody supplied in 1x PBS buffer with 0.09% (w/v) sodium azide and 2% sucrose. <i>Note that this product is shipped as lyophilized powder to China customers.</i>
Conjugation:	Unconjugated
Storage:	Store at -20°C as received.
Stability:	Stable for 12 months from date of receipt.
Predicted Protein Size:	78 kDa
Gene Name:	adhesion G protein-coupled receptor F4
Database Link:	NP_722580 Entrez Gene 221393 Human Q8IZF3
Background:	GPR115 is an orphan receptor.
Synonyms:	GPR115; PGR18
Note:	Immunogen sequence homology: Human: 100%; Horse: 93%; Dog: 86%; Rabbit: 86%; Pig: 79%; Bovine: 79%
Protein Families:	Druggable Genome, Transmembrane



[View online »](#)

Product images:



Host: Rabbit; Target Name: GPR115; Sample
Tissue: Fetal Kidney lysates; Antibody Dilution:
1.0ug/ml