

Product datasheet for **TA331605**

GPR111 (ADGRF2) Rabbit Polyclonal Antibody

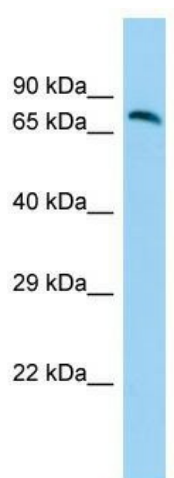
Product data:

Product Type:	Primary Antibodies
Applications:	WB
Recommended Dilution:	WB
Reactivity:	Human
Host:	Rabbit
Isotype:	IgG
Clonality:	Polyclonal
Immunogen:	The immunogen for Anti-GPR111 Antibody is: synthetic peptide directed towards the N-terminal region of Human GPR111. Synthetic peptide located within the following region: TESCRTLYQAASKSKEKVPARPHGVCDGVCTDYSQCTQPCPPDTQGNMGF
Formulation:	Liquid. Purified antibody supplied in 1x PBS buffer with 0.09% (w/v) sodium azide and 2% sucrose. <i>Note that this product is shipped as lyophilized powder to China customers.</i>
Conjugation:	Unconjugated
Storage:	Store at -20°C as received.
Stability:	Stable for 12 months from date of receipt.
Predicted Protein Size:	78 kDa
Gene Name:	adhesion G protein-coupled receptor F2
Database Link:	NP_722581 Entrez Gene 222611 Human Q8IZF7
Background:	GPR111 is a orphan receptor.
Synonyms:	GPR111; hGPCR35; PGR20
Note:	Immunogen sequence homology: Human: 100%; Horse: 85%; Dog: 77%
Protein Families:	Druggable Genome, Transmembrane



[View online »](#)

Product images:



Host: Rabbit; Target Name: GPR111; Sample
Tissue: Fetal Brain lysates; Antibody Dilution:
1.0ug/ml