

Product datasheet for **TA331604**

CBWD2 Rabbit Polyclonal Antibody

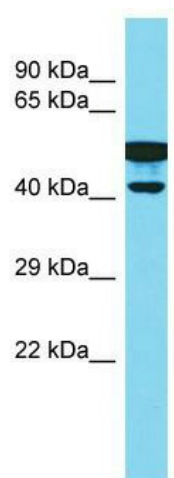
Product data:

Product Type:	Primary Antibodies
Applications:	WB
Recommended Dilution:	WB
Reactivity:	Human
Host:	Rabbit
Isotype:	IgG
Clonality:	Polyclonal
Immunogen:	The immunogen for Anti-CBWD2 Antibody is: synthetic peptide directed towards the C-terminal region of Human CBWD2. Synthetic peptide located within the following region: TFEVPGNAKEEHLNMFIQNLLWEKNVRNKDNHCMEVIRLKGKLVSIKDKSQ
Formulation:	Liquid. Purified antibody supplied in 1x PBS buffer with 0.09% (w/v) sodium azide and 2% sucrose. <i>Note that this product is shipped as lyophilized powder to China customers.</i>
Conjugation:	Unconjugated
Storage:	Store at -20°C as received.
Stability:	Stable for 12 months from date of receipt.
Predicted Protein Size:	43 kDa
Gene Name:	COBW domain containing 2
Database Link:	NP_742000 Entrez Gene 150472 Human Q8IUJ1
Background:	The function of this protein remains unknown.
Synonyms:	COBW domain-containing protein 2; COBW domain containing 2
Note:	Immunogen sequence homology: Human: 100%; Pig: 93%; Rat: 93%; Guinea pig: 93%; Horse: 86%; Mouse: 86%; Dog: 79%; Bovine: 79%; Rabbit: 79%



[View online »](#)

Product images:



Host: Rabbit; Target Name: CBWD2; Sample
Tissue: Fetal Kidney lysates; Antibody Dilution:
1.0ug/ml