

Product datasheet for **TA331602**

REXO1L1 (REXO1L1P) Rabbit Polyclonal Antibody

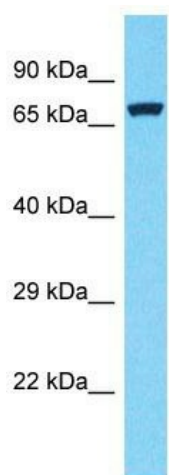
Product data:

Product Type:	Primary Antibodies
Applications:	WB
Recommended Dilution:	WB
Reactivity:	Human
Host:	Rabbit
Isotype:	IgG
Clonality:	Polyclonal
Immunogen:	The immunogen for Anti-REXO1L1 Antibody is: synthetic peptide directed towards the middle region of Human REXO1L1. Synthetic peptide located within the following region: ASSSQRSGSKVGRQP GKTRNRSGMACKTTATTSSKRIVRRASLPSLSLK
Formulation:	Liquid. Purified antibody supplied in 1x PBS buffer with 0.09% (w/v) sodium azide and 2% sucrose. <i>Note that this product is shipped as lyophilized powder to China customers.</i>
Conjugation:	Unconjugated
Storage:	Store at -20°C as received.
Stability:	Stable for 12 months from date of receipt.
Predicted Protein Size:	74 kDa
Gene Name:	REX1, RNA exonuclease 1 homolog-like 1, pseudogene
Database Link:	NP_758439 Entrez Gene 254958 Human
Background:	The function of this protein remains unknown.
Synonyms:	GOR
Note:	Immunogen sequence homology: Human: 100%



[View online »](#)

Product images:



Host: Rabbit

Target Name: REXO1L1

Sample Tissue: RPMI-8226 Cell Lysate

Antibody Dilution: 1.0µg/ml

Host: Rabbit; Target Name: REXO1L1; Sample Tissue: RPMI-8226 Whole Cell lysates; Antibody Dilution: 1.0ug/ml