

## Product datasheet for **TA331601**

### Arntl2 Rabbit Polyclonal Antibody

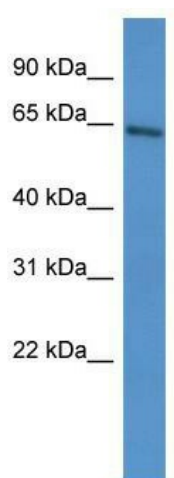
#### Product data:

Product Type:	Primary Antibodies
Applications:	WB
Recommended Dilution:	WB
Reactivity:	Mouse
Host:	Rabbit
Isotype:	IgG
Clonality:	Polyclonal
Immunogen:	The immunogen for Anti-Arntl2 Antibody: synthetic peptide corresponding to a region of Mouse. Synthetic peptide located within the following region: AILGYLPQELLGTSCYEYFHQDDHSSLTDKHKAVLQSKEKILTDSYKFRV
Formulation:	Liquid. Purified antibody supplied in 1x PBS buffer with 0.09% (w/v) sodium azide and 2% sucrose. <i>Note that this product is shipped as lyophilized powder to China customers.</i>
Conjugation:	Unconjugated
Storage:	Store at -20°C as received.
Stability:	Stable for 12 months from date of receipt.
Predicted Protein Size:	64 kDa
Gene Name:	aryl hydrocarbon receptor nuclear translocator-like 2
Database Link:	<a href="#">NP_758513</a> <a href="#">Entrez Gene 272322 Mouse</a> <a href="#">Q2VPD4</a>
Background:	ARNTL2/CLOCK heterodimers activate E-box element (3'-CACGTG-5') transcription. Also, in umbilical vein endothelial cells, Arntl2 activates SERPINE1 through E-box sites. This transactivation is inhibited by PER2 and CRY1.
Synonyms:	bHLHe6; BMAL2; CLIF; MGC149671; MGC149672; MOP9; PASD9
Note:	Immunogen sequence homology: Rat: 100%; Human: 100%; Mouse: 100%; Dog: 92%; Pig: 92%; Horse: 92%; Bovine: 92%; Rabbit: 83%



[View online »](#)

## Product images:



WB Suggested Anti-Arntl2 Antibody Titration: 0.2-1 ug/ml; ELISA Titer: 1: 312500; Positive Control: Mouse Heart