

Product datasheet for **TA331600**

SLITRK4 Rabbit Polyclonal Antibody

Product data:

| | |
|-------------------------|---|
| Product Type: | Primary Antibodies |
| Applications: | WB |
| Recommended Dilution: | WB |
| Reactivity: | Human |
| Host: | Rabbit |
| Isotype: | IgG |
| Clonality: | Polyclonal |
| Immunogen: | The immunogen for Anti-SLITRK4 Antibody is: synthetic peptide directed towards the C-terminal region of Human SLITRK4. Synthetic peptide located within the following region: CGSMLQLRKHDHKTNNKDGGLSTEAFIPQTIEQMSKSHTCGLKESETGFM |
| Formulation: | Liquid. Purified antibody supplied in 1x PBS buffer with 0.09% (w/v) sodium azide and 2% sucrose. <i>Note that this product is shipped as lyophilized powder to China customers.</i> |
| Conjugation: | Unconjugated |
| Storage: | Store at -20°C as received. |
| Stability: | Stable for 12 months from date of receipt. |
| Predicted Protein Size: | 92 kDa |
| Gene Name: | SLIT and NTRK like family member 4 |
| Database Link: | NP_775101 Entrez Gene 139065 Human Q8IW52 |
| Background: | This gene encodes a transmembrane protein belonging to the the SLITRK family. These family members include two N-terminal leucine-rich repeat domains similar to those found in the axonal growth-controlling protein SLIT, as well as C-terminal regions similar to neurotrophin receptors. Studies of an homologous protein in mouse suggest that this family member functions to suppress neurite outgrowth. |
| Synonyms: | DKFZp547M2010 |

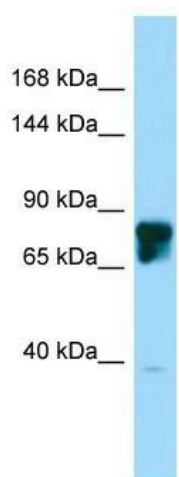


[View online »](#)

Note: Immunogen sequence homology: Dog: 100%; Rat: 100%; Horse: 100%; Human: 100%; Mouse: 100%; Bovine: 93%; Rabbit: 93%; Pig: 79%

Protein Families: Transmembrane

Product images:



Host: Rabbit; Target Name: SLITRK4; Sample Tissue: 721_B Whole Cell lysates; Antibody Dilution: 1.0ug/ml