

Product datasheet for **TA331596**

CLEC4F Rabbit Polyclonal Antibody

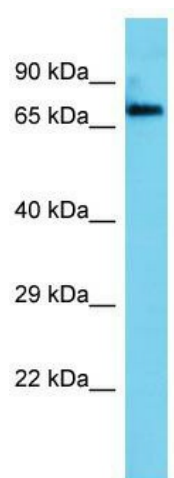
Product data:

Product Type:	Primary Antibodies
Applications:	WB
Recommended Dilution:	WB
Reactivity:	Human
Host:	Rabbit
Isotype:	IgG
Clonality:	Polyclonal
Immunogen:	The immunogen for Anti-CLEC4F Antibody is: synthetic peptide directed towards the C-terminal region of Human CLEC4F. Synthetic peptide located within the following region: DSNLQKASAEIQRLRGDLENTKALTMEIQEQSRLKTLHVVITSQEQLQR
Formulation:	Liquid. Purified antibody supplied in 1x PBS buffer with 0.09% (w/v) sodium azide and 2% sucrose. <i>Note that this product is shipped as lyophilized powder to China customers.</i>
Conjugation:	Unconjugated
Storage:	Store at -20°C as received.
Stability:	Stable for 12 months from date of receipt.
Predicted Protein Size:	65 kDa
Gene Name:	C-type lectin domain family 4 member F
Database Link:	NP_775806 Entrez Gene 165530 Human Q8N1N0
Background:	CLEC4F is a receptor with an affinity for galactose and fucose. It could be involved in endocytosis.
Synonyms:	CLECSF13; KCLR
Note:	Immunogen sequence homology: Human: 100%
Protein Families:	Druggable Genome, Transmembrane



[View online »](#)

Product images:



Host: Rabbit; Target Name: CLEC4F; Sample
Tissue: 293T Whole Cell lysates; Antibody
Dilution: 1.0ug/ml