

Product datasheet for TA331593

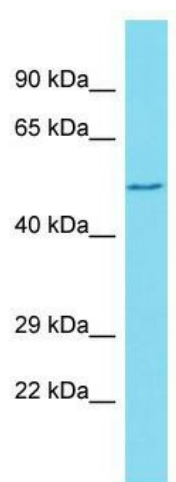
GXYLT1 Rabbit Polyclonal Antibody

Product data:

Product Type:	Primary Antibodies
Applications:	WB
Recommended Dilution:	WB
Reactivity:	Human
Host:	Rabbit
Isotype:	IgG
Clonality:	Polyclonal
Immunogen:	The immunogen for Anti-GXYLT1 Antibody is: synthetic peptide directed towards the C-terminal region of Human GXYLT1. Synthetic peptide located within the following region: LFVFPCQWNYPDHCIYGSNCQEAEEGGIFILHGNRGVYHDDKQPAFRAV
Formulation:	Liquid. Purified antibody supplied in 1x PBS buffer with 0.09% (w/v) sodium azide and 2% sucrose. <i>Note that this product is shipped as lyophilized powder to China customers.</i>
Conjugation:	Unconjugated
Storage:	Store at -20°C as received.
Stability:	Stable for 12 months from date of receipt.
Predicted Protein Size:	48 kDa
Gene Name:	glucoside xylosyltransferase 1
Database Link:	NP_775872 Entrez Gene 283464 Human Q4G148
Background:	GXYLT1 is a xylosyltransferase that adds the first xylose to O-glucose-modified residues in the epidermal growth factor repeats of proteins such as NOTCH1.
Synonyms:	GLT8D3
Note:	Immunogen sequence homology: Human: 100%; Dog: 93%; Pig: 93%; Horse: 93%; Bovine: 93%; Guinea pig: 93%; Rat: 86%; Rabbit: 86%; Mouse: 79%
Protein Families:	Transmembrane


[View online »](#)

Product images:



Host: Rabbit; Target Name: GXYLT1; Sample
Tissue: Jurkat Whole Cell lysates; Antibody
Dilution: 1.0ug/ml