

Product datasheet for **TA331591**

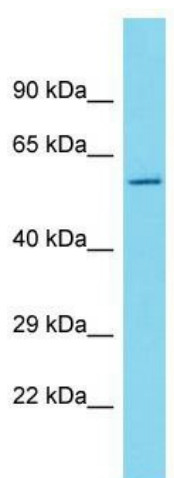
CES4A Rabbit Polyclonal Antibody

Product data:

Product Type:	Primary Antibodies
Applications:	WB
Recommended Dilution:	WB
Reactivity:	Human
Host:	Rabbit
Isotype:	IgG
Clonality:	Polyclonal
Immunogen:	The immunogen for Anti-CES4A Antibody is: synthetic peptide directed towards the C-terminal region of Human CES4A. Synthetic peptide located within the following region: KYWANFARTGNPNDGNLPCWPRYNKDEKYLQLDFTTRVGMKLKEKKMAFW
Formulation:	Liquid. Purified antibody supplied in 1x PBS buffer with 0.09% (w/v) sodium azide and 2% sucrose.
Purification:	Affinity Purified
Conjugation:	Unconjugated
Storage:	Store at -20°C as received.
Stability:	Stable for 12 months from date of receipt.
Predicted Protein Size:	56 kDa
Gene Name:	carboxylesterase 4A
Database Link:	NP_776176 Entrez Gene 283848 Human Q5XG92
Background:	The function of this protein remains unknown.
Synonyms:	CES6; CES8
Note:	Immunogen sequence homology: Human: 100%; Bovine: 100%; Pig: 86%; Mouse: 86%; Guinea pig: 86%; Rat: 79%; Horse: 79%; Rabbit: 79%
Protein Families:	Druggable Genome



[View online »](#)

Product images:

Host: Rabbit; Target Name: CES4A; Sample
Tissue: PANC1 Whole Cell lysates; Antibody
Dilution: 1.0ug/ml