

Product datasheet for **TA331590**

CD300LB Rabbit Polyclonal Antibody

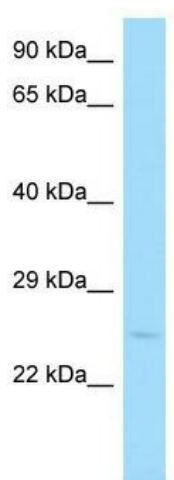
Product data:

Product Type:	Primary Antibodies
Applications:	WB
Recommended Dilution:	WB
Reactivity:	Human
Host:	Rabbit
Isotype:	IgG
Clonality:	Polyclonal
Immunogen:	The immunogen for Anti-CD300LB Antibody is: synthetic peptide directed towards the middle region of Human CD300LB. Synthetic peptide located within the following region: CRGVRWDTCKILITRGSEQGEKSDRVSIDKNQKDRTFTVTMEGLRRDDA
Formulation:	Liquid. Purified antibody supplied in 1x PBS buffer with 0.09% (w/v) sodium azide and 2% sucrose. <i>Note that this product is shipped as lyophilized powder to China customers.</i>
Conjugation:	Unconjugated
Storage:	Store at -20°C as received.
Stability:	Stable for 12 months from date of receipt.
Predicted Protein Size:	26 kDa
Gene Name:	CD300 molecule like family member b
Database Link:	NP_777552 Entrez Gene 124599 Human A8K4G0
Background:	CD300LB is a nonclassical activating receptor of the immunoglobulin (Ig) superfamily expressed on myeloid cells.
Synonyms:	CD300b; CLM-7; CLM7; CMRF35-A2; IREM-3; IREM3; TREM-5; TREM5
Note:	Immunogen sequence homology: Human: 100%
Protein Families:	Druggable Genome, Transmembrane



[View online »](#)

Product images:



Host: Rabbit; Target Name: CD300LB; Sample
Tissue: Jurkat Whole Cell lysates; Antibody
Dilution: 1.0ug/ml