

## Product datasheet for **TA331589**

### **BPIL3 (BPIFB6) Rabbit Polyclonal Antibody**

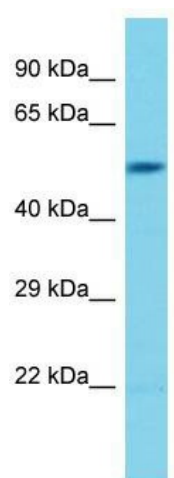
#### **Product data:**

Product Type:	Primary Antibodies
Applications:	WB
Recommended Dilution:	WB
Reactivity:	Human
Host:	Rabbit
Isotype:	IgG
Clonality:	Polyclonal
Immunogen:	The immunogen for Anti-BPIFB6 Antibody is: synthetic peptide directed towards the middle region of Human BPIFB6. Synthetic peptide located within the following region: QLDFSPVVQQKGTKIKLADAGEALTFPEGYAKGSSQLLLPATFLSAELA
Formulation:	Liquid. Purified antibody supplied in 1x PBS buffer with 0.09% (w/v) sodium azide and 2% sucrose. <i>Note that this product is shipped as lyophilized powder to China customers.</i>
Conjugation:	Unconjugated
Storage:	Store at -20°C as received.
Stability:	Stable for 12 months from date of receipt.
Predicted Protein Size:	50 kDa
Gene Name:	BPI fold containing family B member 6
Database Link:	<a href="#">NP_777557</a> <a href="#">Entrez Gene 128859 Human</a> <a href="#">Q8NFAQ5</a>
Background:	The function of this protein remains unknown.
Synonyms:	BPIL3; LPLUNC6
Note:	Immunogen sequence homology: Human: 100%; Bovine: 86%
Protein Families:	Druggable Genome, Secreted Protein



[View online »](#)

## Product images:



Host: Rabbit; Target Name: BPIFB6; Sample  
Tissue: RPMI-8226 Whole Cell lysates; Antibody  
Dilution: 1.0ug/ml