

Product datasheet for **TA331588**

BPIL3 (BPIFB6) Rabbit Polyclonal Antibody

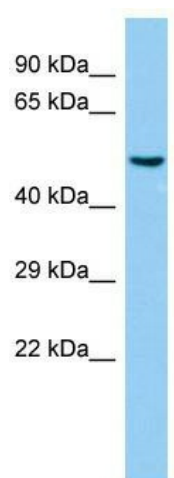
Product data:

Product Type:	Primary Antibodies
Applications:	WB
Recommended Dilution:	WB
Reactivity:	Human
Host:	Rabbit
Isotype:	IgG
Clonality:	Polyclonal
Immunogen:	The immunogen for Anti-BPIFB6 Antibody is: synthetic peptide directed towards the N-terminal region of Human BPIFB6. Synthetic peptide located within the following region: EKMAAEAGKKQPGMKPIKGITNLKVKDVQLPVITLNFVPGVGIFQCVSTG
Formulation:	Liquid. Purified antibody supplied in 1x PBS buffer with 0.09% (w/v) sodium azide and 2% sucrose.
Conjugation:	Unconjugated
Storage:	Store at -20°C as received.
Stability:	Stable for 12 months from date of receipt.
Predicted Protein Size:	50 kDa
Gene Name:	BPI fold containing family B member 6
Database Link:	NP_777557 Entrez Gene 128859 Human Q8NFO5
Background:	The function of this protein remains unknown.
Synonyms:	BPIL3; LPLUNC6
Note:	Immunogen sequence homology: Human: 100%; Pig: 93%; Rabbit: 93%; Rat: 86%; Horse: 86%; Guinea pig: 86%
Protein Families:	Druggable Genome, Secreted Protein



[View online »](#)

Product images:



Host: Rabbit; Target Name: BPIFB6; Sample Tissue: Fetal Lung lysates; Antibody Dilution: 1.0ug/ml